

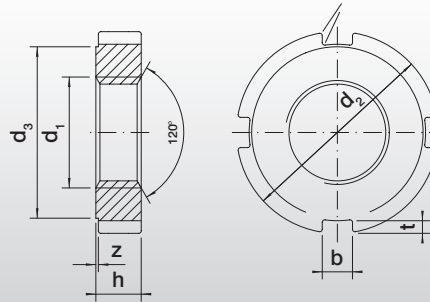


Nutmutter Slotted round nuts

DIN 1804



Kanten gebrochen/ chamfered edges



Abmessungen/dimensions in mm

Bezeichnung/ Description	Gewinde d_1 / Thread d_1	d_2	d_3	b	h	t	z	kg/1000
DIN 1804 M 6	M 6 x 0,75	16	12	4	5	1,5	0,5	0,575
DIN 1804 M 8	M 8 x 1,00	20	16	4	5	1,5	0,5	0,925
DIN 1804 M 10	M 10 x 1,00	25	20	5	6	2,0	0,5	1,740
DIN 1804 M 12	M 12 x 1,50	28	23	5	6	2,0	0,5	2,170
DIN 1804 M 14	M 14 x 1,50	30	25	5	7	2,0	0,5	2,860
DIN 1804 M 16	M 16 x 1,50	32	27	5	7	2,0	0,5	3,140
DIN 1804 M 18	M 18 x 1,50	34	28	6	8	2,5	0,5	3,800
DIN 1804 M 20	M 20 x 1,50	36	30	6	8	2,5	0,5	4,130
DIN 1804 M 22	M 22 x 1,50	40	34	6	9	2,5	0,5	5,900
DIN 1804 M 24	M 24 x 1,50	42	36	6	9	2,5	0,5	6,300
DIN 1804 M 26	M 26 x 1,50	45	38	7	10	3,0	0,5	7,820
DIN 1804 M 28	M 28 x 1,50	50	43	7	10	3,0	0,5	10,100
DIN 1804 M 30	M 30 x 1,50	50	43	7	10	3,0	0,5	9,350
DIN 1804 M 32	M 32 x 1,50	52	45	7	11	3,0	0,5	10,800
DIN 1804 M 35	M 35 x 1,50	55	48	7	11	3,0	0,5	11,700
DIN 1804 M 38	M 38 x 1,50	58	50	8	11	3,5	0,5	12,300
DIN 1804 M 40	M 40 x 1,50	62	54	8	12	3,5	0,5	15,900
DIN 1804 M 42	M 42 x 1,50	62	54	8	12	3,5	0,5	14,700
DIN 1804 M 45	M 45 x 1,50	68	60	8	12	3,5	0,5	18,100
DIN 1804 M 48	M 48 x 1,50	75	67	8	13	3,5	0,5	25,300
DIN 1804 M 50	M 50 x 1,50	75	67	8	13	3,5	0,5	23,800
DIN 1804 M 52	M 52 x 1,50	80	70	10	13	4,0	0,5	27,500
DIN 1804 M 55	M 55 x 1,50	80	70	10	13	4,0	0,5	25,100
DIN 1804 M 58	M 58 x 1,50	90	80	10	13	4,0	0,5	36,000
DIN 1804 M 60	M 60 x 1,50	90	80	10	13	4,0	0,5	34,100
DIN 1804 M 62	M 62 x 1,50	95	85	10	14	4,0	0,5	42,600
DIN 1804 M 65	M 65 x 1,50	95	85	10	14	4,0	0,5	39,400
DIN 1804 M 68	M 68 x 1,50	100	90	10	14	4,0	0,5	44,400
DIN 1804 M 70	M 70 x 1,50	100	90	10	14	4,0	0,5	41,800
DIN 1804 M 72	M 72 x 1,50	110	100	10	14	4,0	0,5	57,700
DIN 1804 M 75	M 75 x 1,50	110	100	10	14	4,0	0,5	54,000
DIN 1804 M 80	M 80 x 2,00	115	105	10	16	4,0	1,0	57,600
DIN 1804 M 85	M 85 x 2,00	120	110	10	16	4,0	1,0	68,000
DIN 1804 M 90	M 90 x 2,00	130	120	10	16	4,0	1,0	84,300
DIN 1804 M 95	M 95 x 2,00	135	120	12	16	5,0	1,0	86,000
DIN 1804 M 100	M 100 x 2,00	145	130	12	16	5,0	1,0	104,000
DIN 1804 M 105	M 105 x 2,00	155	140	12	16	5,0	1,0	123,000
DIN 1804 M 110	M 110 x 2,00	155	140	12	16	5,0	1,0	113,000
DIN 1804 M 115	M 115 x 2,00	165	150	12	18	5,0	1,0	150,000
DIN 1804 M 120	M 120 x 2,00	165	150	12	18	5,0	1,0	137,000
DIN 1804 M 125	M 125 x 2,00	180	165	12	18	5,0	1,0	178,000
DIN 1804 M 130	M 130 x 3,00	180	165	12	18	5,0	1,0	167,000
DIN 1804 M 140	M 140 x 3,00	195	180	12	18	5,0	1,0	200,000
DIN 1804 M 150	M 150 x 3,00	205	190	12	18	5,0	1,0	212,000

Nutmuttern

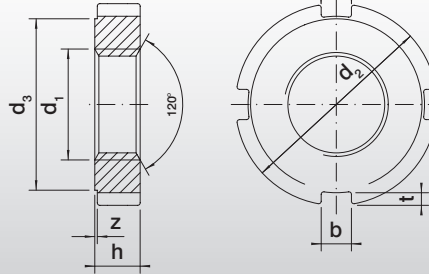
Slotted round nuts

MERCANTA



DIN 1804

Kanten gebrochen / chamfered edges



Abmessungen / dimensions in mm

Bezeichnung / Description	Gewinde d_1 / Thread d_1	d_2	d_3	b	h	t	z	kg / 1000
DIN 1804 M 160	M 160 x 3,00	220	205	12	20	5,0	1,0	278,000
DIN 1804 M 170	M 170 x 3,00	230	210	16	20	7,0	1,0	286,000
DIN 1804 M 180	M 180 x 3,00	245	225	16	20	7,0	1,0	330,000
DIN 1804 M 190	M 190 x 3,00	260	240	16	20	7,0	1,0	377,000
DIN 1804 M 200	M 200 x 3,00	270	250	16	22	7,0	1,0	436,000